

STAINBUSTER®

NEW



WHITE MAGIC

THE INNOVATIVE COMPOSITE BURS

Gently remove stains and cements from tooth surfaces with no damage to enamel, ceramics or soft tissues.

DAILY PRACTICE: stain removal, cement or composite surplus grinding, temporary cement removal, light maintenance scaling.

ORTHODONTICS: elimination of adhesive cement remnants after bracket removal.

PERIODONTICS: scaling, root surfacing, easy access to furcation.

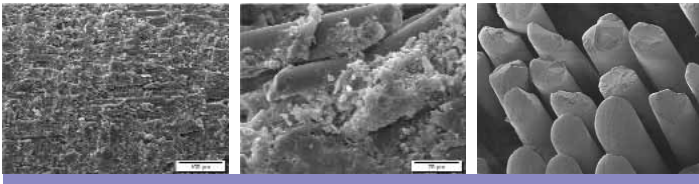
IMPLANTOLOGY: sealing cement surplus removal even in narrow & difficult-to-reach places.

PRESENTATION

Abrasive Technology owns patents and manufactures burs out of composite material, a resin reinforced by zircon-rich fiberglass.

STAINBUSTER® burs are designed to remove cement, stains and colored coatings gently from the surface of the enamel; they do not abrade tooth enamel or ceramic and only lightly chip cement, dentin and filling composites.

The special characteristic of these burs is the fiber sections with abrasive power which cover the entire working surface and which split up into small fragments as and when they act on a hard surface. At the same time the resin matrix is used up, new sections of fibers are exposed; **the STAINBUSTER® burs are self-sharpening while maintaining continuous abrasive power.**



The zircon-rich fiberglass is particularly interesting, as unlike ordinary fiberglass, it does not split up into minuscule fibrils which can be extremely irritating to the skin and mucous membrane.

Zircon-rich fiberglass is 14 µm in diameter. It breaks or fragments into particles (not fibrils) which are always longer than 5 µm with a length/diameter ratio of over 3.

They are therefore not “breathable”, in other words, they cannot penetrate the alveoli pulmonis, according to criteria and values defined by the World Health Organization.

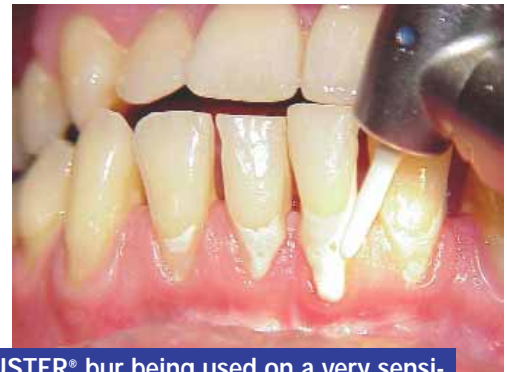
This **patented*** characteristic allows it to be used for dental burs with permanent abrasive power.

* US PATENTS 6,860,738 and 6,386,874. Patents pending. Other patents worldwide.

STAINBUSTER® BURS ARE PAINLESS

STAINBUSTER® burs do not affect the soft tissues such as the gingival fibro mucous membrane as they slide over them without cutting or grinding them.

This quality, and the fact that the instrument hardly heats up during use, makes the process virtually pain free, hence its easy acceptance by patients compared with other instruments and methods.



STAINBUSTER® bur being used on a very sensitive area with no need for anesthesia.

By courtesy of Dr. Frank MÜLLER

RISK ANALYSIS & BIOCOMPATIBILITY

According to the international standard ISO 7405 concerning the preclinical evaluation of biocompatibility of medical devices used in dentistry, the following tests have been carried out:

- **Cytotoxicity, standard ISO 10993-5:**
Result: negative
Test report no. 2003-DGM483-1
- **Acute toxicity in the mouse, standard ISO 10993 11 or EN 30993-11:**
Result: negative
Test report no. 2003-DQZ-623-1
- **Dermal irritation in the rabbit, standard ISO 10993 10:**
Result: negative
Test report no. 2003-DQZ-623-2
- **Sensitization in the guinea pig, standard ISO 10093-10:**
Result: negative
Test report no. 2003-DQZ-623-3

STAINBUSTER® burs offer no risk to human health.

INDICATIONS

DAILY PRACTICE

- **Removal of stains and colored coatings from the surface of the teeth**, including difficult-to-reach places (interproximal faces of the lower incisors, for example), with absolutely no harm to the dental enamel.

Recommended shapes:

2501, 2502, 2503, 2504.

- **Cleaning of the enamel after ultrasonic scaling:** the practitioner first uses manual instruments, then the ultrasonics. When the work is completed, small residual particles give the sensation of a rough surface and, more importantly, are initiator nuclei in forming new calculus crystals. **STAINBUSTER® burs make the tooth surface smooth and comfortable and delay tartar reformation.**

Recommended shapes:

2501, 2502, 2503, 2504.



By courtesy of Dr. CAVALLI

- **Grinding of composite fillings**, particularly composite surplus between the teeth where any other rotary instrument would be likely to harm the enamel: after using a **STAINBUSTER®** bur, all that is required is a final polish to make the teeth shine.
- **Easy removal of surplus cement** after final sealing of ceramic prosthetic bridges or crowns without risk to the surrounding soft tissues and the ceramics.

Recommended shapes:

2501, 2502, 2503, 2504.

- **Elimination of temporary cement** after removal of temporary prostheses without risk of altering the definitive shape of the preparations.

Recommended shapes:

2501, 2502, 2503, 2504, 4002.

- **Teeth scaling and cleaning:** **STAINBUSTER®** burs are not designed for heavy scaling. However, they can be used for light maintenance scaling and the resultant cleaning of the teeth.

Recommended shapes:

2501, 2502, 2503, 2504, 2505, 2506.



ORTHODONTICS

- **Elimination of adhesive cement remnants** from the teeth surface after brackets removal: most of the cement is initially removed by using a tungsten carbide bur, then a **STAINBUSTER®** bur can reach the enamel without harm, without risk of abrasion or scratches, quickly and without special precautions, therefore without stress.

Recommended shapes:

2501, 2502, 2504, 4001, 4002.



Acceptable time budget

Minimally invasive

Highly glossy enamel surface

PERIODONTICS

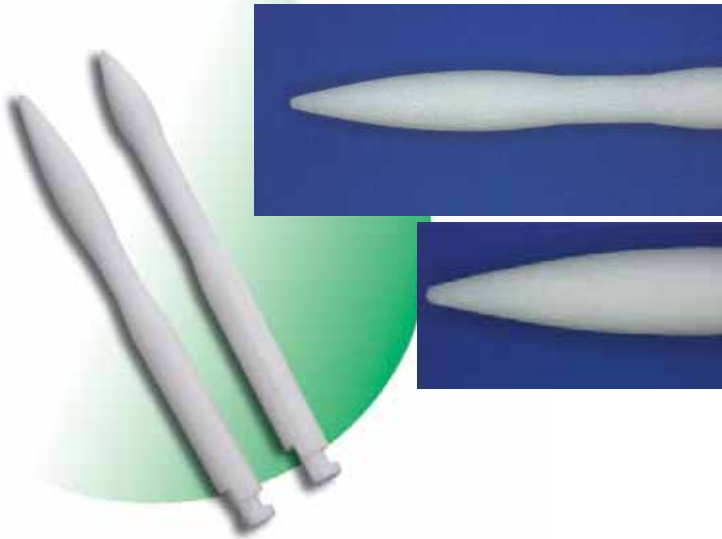
- **Root planing and surfacing:** after in-depth scaling and cleaning of periodontal pockets using manual instruments, **STAINBUSTER®** burs are particularly useful in smoothing out and softening the radicular surfaces, encouraging healing and flap reattachment.

Recommended shapes:

2501, 2504, 2505, 2506.

Effective root surfacing Easy access to furcation

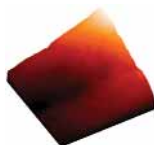
STAINBUSTER® PARO :
length 28 mm



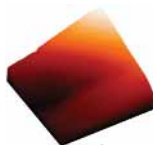
White light topography scanner



BASELINE



ULTRASONICS



STAINBUSTER®

IMPLANTOLOGY

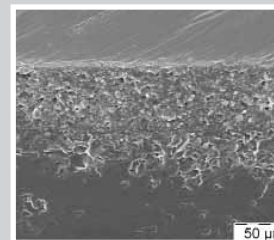
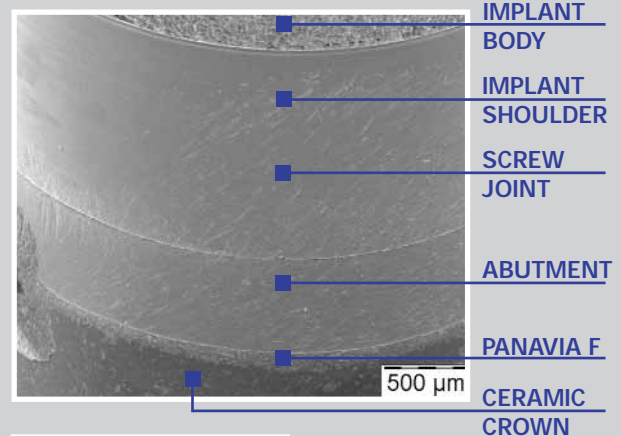
- After the implant-carrying prosthetic components have been sealed, **STAINBUSTER®** burs are the only rotary instruments which can clean away the sealing cement surplus **even in difficult-to-reach or very narrow undercut areas** (study performed by Drs. S. Liebrecht and W. J. Finger, University of Cologne).

STAINBUSTER® burs are also well-suited maintenance tools for gentle removal of calculus deposits from implant surfaces.

Recommended shapes:

2501, 2504, 2505, 2506.

Removal of resin luting cement remnants with **STAINBUSTER®** burs even in difficult-to-reach areas

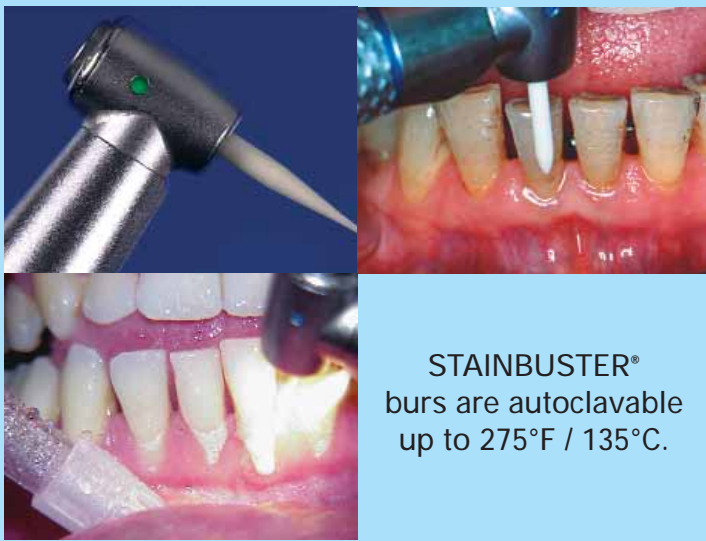


INSTRUCTIONS FOR USE

STAINBUSTER® latch-head burs are used at chairside with a **contra-angle** and a water spray which all practitioners have in their dental office and require no special device.

STAINBUSTER® burs should be used at **slow speed**, around 10,000 rpm, applying slight pressure and with a fine water spray.

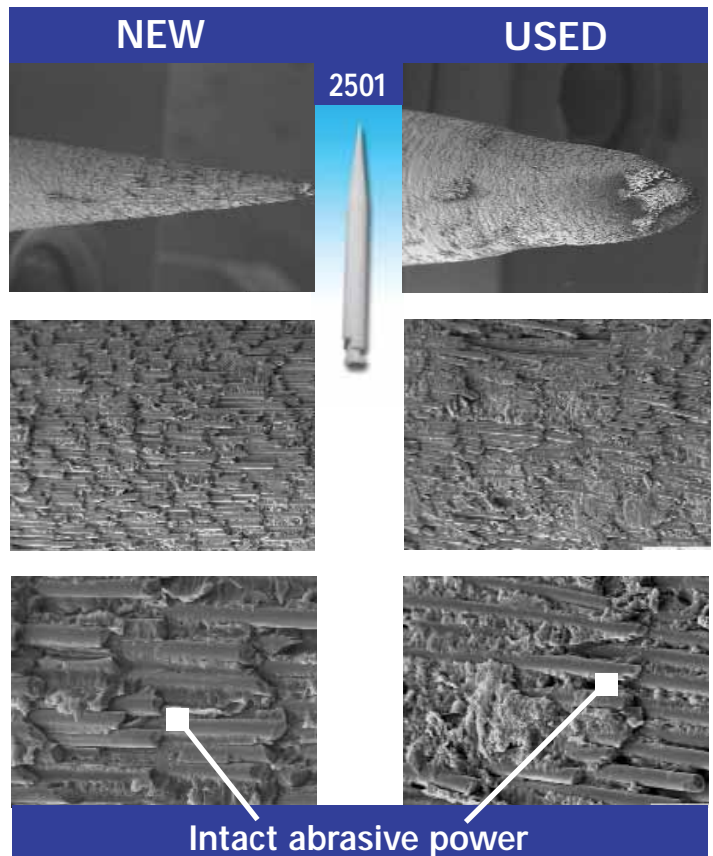
The water spray carries away the grinding debris, cleans up the working field and enhances visibility and control. Note that using **STAINBUSTER®** burs without water spray is in no way harmful or contraindicated at low-speed: in this case of course, at the end of the polishing session, spraying and rinsing out of the instrumented area is a routine procedure to remove any remaining debris.



STAINBUSTER® burs are autoclavable up to 275°F / 135°C.

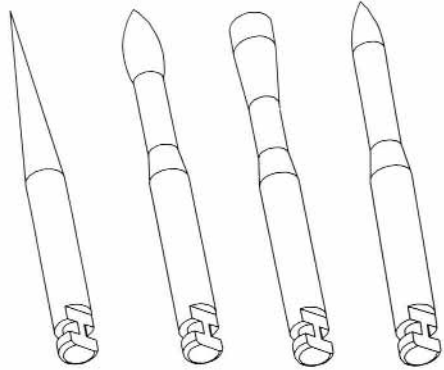
STAINBUSTER® burs can be used as **disposable burs**, one bur per patient, depending on the work being done and the shape used.

The pointed shape, essential for reaching difficult and very narrow places, wears more quickly. It can subsequently be used in more accessible places, **for its abrasive power remains intact even if the initial shape is lost.**



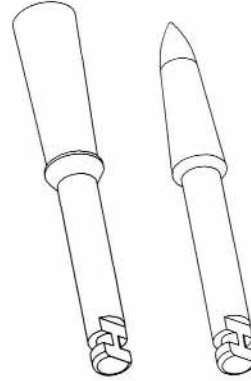
Shapes

STANDARD : length 25 mm



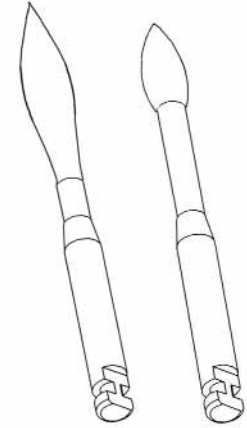
2501 2502 2503 2504

JUMBO : large head



4001 4002

PARO : length 28 mm



2505 2506

Available in a blister package of 6



Same shape

2501	2505
2502	2506
2503	4001
2504	4002

Assorted shapes

2540



 **abrasive technology**

WORLD HEADQUARTERS
Abrasive Technology, Inc.
8400 Green Meadows Dr.
P.O. Box 545
Lewis Center, Ohio 43035 USA
Ph: 1.740.548.4100
Fax: 1.740.548.7617

EUROPEAN HEADQUARTERS
Abrasive Technology Ltd.
Roxby Place, Fulham
London
SW6 1RT United Kingdom
Ph: 44.20.7471.0200
Fax: 44.20.7471.0202

ASIAN HEADQUARTERS
Abrasive Technology Asia Pacific Pte Ltd
Blk 1093 Lower Delta Rd. 05-11/13
Tiong Bahru Industrial Estate
Singapore 169204
Ph: 65.6270.6878
Fax: 65.6270.6877

CE
0510

www.abrasive-tech.com

© 2006 Abrasive Technology 6/06